



REALWHEELS CORPORATION

INSTALLATION QUESTIONS? CALL 1-800-982-1180

PIERCE CENTURION OVER-THE-LUG MOUNTING SYSTEM FRONT SIMULATOR INSTRUCTIONS

VERY IMPORTANT! Read And Understand These Steps Before Installation.



FIGURE 1A



FIGURE 1B

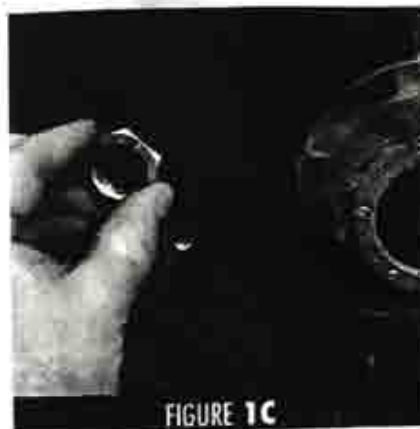


FIGURE 1C



FIGURE 1D



FIGURE 2A



FIGURE 2B

STEP 1

Installing The Mounting Brackets

- Place the front mounting brackets on top of two lug nuts directly across from each other. (See Figs. 1A & 1B)
- Next, thread two jam nuts over each of the brackets onto the wheel studs and tighten securely. (See Fig. 1C & 1D)

IMPORTANT: DO NOT USE AIR TOOLS TO TIGHTEN THE BRACKET JAM NUTS.

STEP 2

Mounting The Simulator To The Wheel

- Place wheel simulator onto the wheel making sure to line the holes in the simulator with the threaded holes of the mounting brackets. (See Fig. 2A)
- Then thread two Phillips head screws through the simulator and into the threaded holes of the mounting brackets and tighten securely. (See Fig. 2B)
- Repeat the same process on the other wheel and you're finished. (See Fig. 2C)



FIGURE 2C

RealWheels Corporation, Inc. • 3940 Tannahill Drive • Gurnee, IL 60031
847-662-7722 • Fax 847-662-7744 • www.realwheels.com • info@realwheels.com • toll-free 1-800-982-1180