



Atwood Mobile Products LLC
 1120 North Main Street • Elkhart, IN 46514
 PHONE: 574-264-2131 FAX: 574-262-2550
 INTERNET: <http://www.askforatwood.com>



LITERATURE NUMBER **MPD 90222**

**L.P. GAS
 ON DEMAND
 WATER HEATER**

Models
 OD50, OD50CW

ENGLISH - FRANÇAIS

•Installation •Operation •Maintenance

Effective 07.09.13

This water heater design has been certified by the Canadian Standards Association for installation in recreation vehicles. **This water heater is not for use in marine applications.**

SERVICE CALLS & QUESTIONS

Location and phone numbers of qualified Service Centers can be found at our website <http://www.askforatwood.com> or call 866.869.8116 to locate a Service Center.

SAFETY ALERT SYMBOLS	
Safety Symbols alerting you to potential personal safety hazards. Obey all safety messages following these symbols.	
 WARNING avoid possible injury or death	 CAUTION avoid possible injury and/or property damage

WARNING FIRE OR EXPLOSION
<ul style="list-style-type: none"> • If the information in this manual is not followed exactly, a fire or explosion may result causing property damage, personal injury or loss of life. <p>– Do not store or use gasoline or other flammable vapors and liquids in the vicinity of this or any other appliance.</p> <p>WHAT TO DO IF YOU SMELL GAS</p> <ul style="list-style-type: none"> • Evacuate ALL persons from vehicle. • Shut off gas supply at gas container or source. • DO NOT touch any electrical switch, or use any phone or radio in vehicle. • DO NOT start vehicle's engine or electric generator. • Contact nearest gas supplier or qualified Service Technician for repairs. • If you cannot reach a gas supplier or qualified Service Technician, contact the nearest fire department. • DO NOT turn on gas supply until gas leak(s) has been repaired. <p>– Installation and service must be performed by a qualified installer, service agency or the gas supplier.</p>

Explanation of Model Number:

OD _____ On Demand
 50 _____ Input in 1000's Btu
 01 _____ Generation
 CW _____ Cold Weather Kit

CRITICAL INSTALLATION WARNINGS
<ul style="list-style-type: none"> • Install in recreation vehicles only, RV's are recreation vehicles designed as temporary living quarters for recreation, camping, or travel use having their own power or towed by another vehicle. • All combustion air must be supplied from outside the RV, and all products of combustion must be vented to outside the RV. • DO NOT vent water heater with venting system serving another appliance. • DO NOT vent water heater to an outside enclosed porch area. • Protect building materials from flue gas exhaust. • Install water heater on an exterior wall, with access door opening to outdoors. • DO NOT modify water heater in any way. • DO NOT alter water heater for a positive grounding system. • DO NOT HI-POT water heater unless electronic ignition system (circuit board) has been disconnected. • DO NOT use battery charger to supply power to water heater even when testing. <p>Do not install close to opening door or under room slide-out where the vent or inlet louvers can be obstructed.</p>

USA and Canada – Follow all applicable state and local codes. In the absence of local codes or regulations, refer to the current standards of:

- Local codes or, in the absence of local codes, the National Fuel Gas Code: ANSI Z223.1/NFPA 54 and/or CSA B149.1, Natural Gas and Propane Installation Code.
- Local codes or, in the absence of local codes, the Standard on Recreational Vehicles, NFPA1192 and/or CAN/CSA-Z240 RV.

CUTOUT Requirements

DEM and Aftermarket – Unit can be installed in Atwood, Suburban and Girard openings. Unit can also be installed through the wall from exterior, or prior to erecting wall into place at OEM manufacturing facility

Atwood 6 Gallon Opening	12.7 H x 18.25 W x 17.62 D
Suburban 6 Gallon Opening	12.7 H x 12.7 W x 19.2 D
Atwood 10 Gallon Opening*	15.75 H x 16.2 W x 20.6 D
Suburban 10 Gallon Opening*	16.2 H x 18.2 W x 20.5 D

*Door/Adapter Kit Required

GENERAL INSTALLATION

The following instruction describes the most common type of installation for the water heater. However, there are other approved methods such as baggage compartment and flush mounting. Consult your Field Auditor, Account Manager, or the Atwood Service Department if you have additional questions.

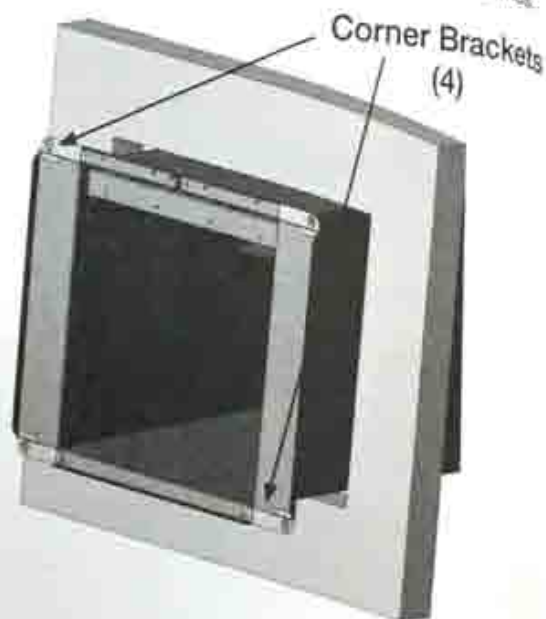
These steps assume the proper location has been determined and is being installed at the OEM prior to erecting the walls.

NOTE: Parts bagged and included with the unit in the box are the corner filler brackets and push on water line connectors.

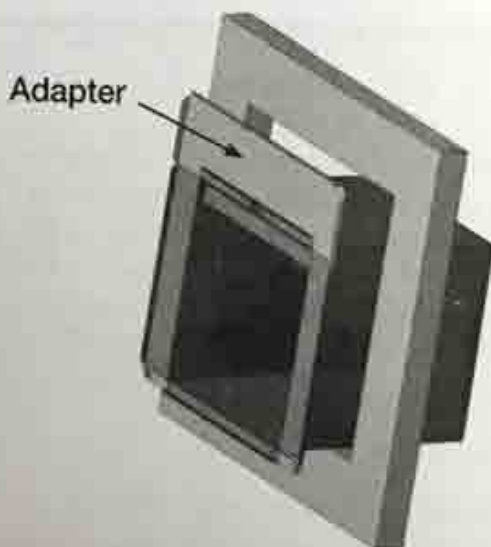
1. Locate the water heater on the floor of the coach at pre-determined location. The unit must be permanently supported at the same level as the bottom of the sidewall cutout (by the floor or a raised floor).
2. To install the unit on carpeting, assure the addition of metal or wood under the unit is added and extends a minimum of three inches beyond the width and depth of the appliance enclosure. Minimum clearance requirement is zero (except front door for proper operation and service).
3. If risk of future connection leakage and damage of adjacent area is of concern, install a drain pan under the unit with drainage to outside of vehicle.
4. Connect plumbing to water lines with fittings provided taking care to make correct "COLD" and "HOT" orientation. Connect 3/8" FM flared LP gas line to 3/8" M flared gas fitting.
 - a. Allow flexibility in water and gas lines so the unit can be pulled through the sidewall opening at least one inch past the skin, allowing for sealing step.
 - b. Assure the water and gas line grommets continue to be intact and properly inserted in the case holes, with no gaps or openings where the line passes

through the case.

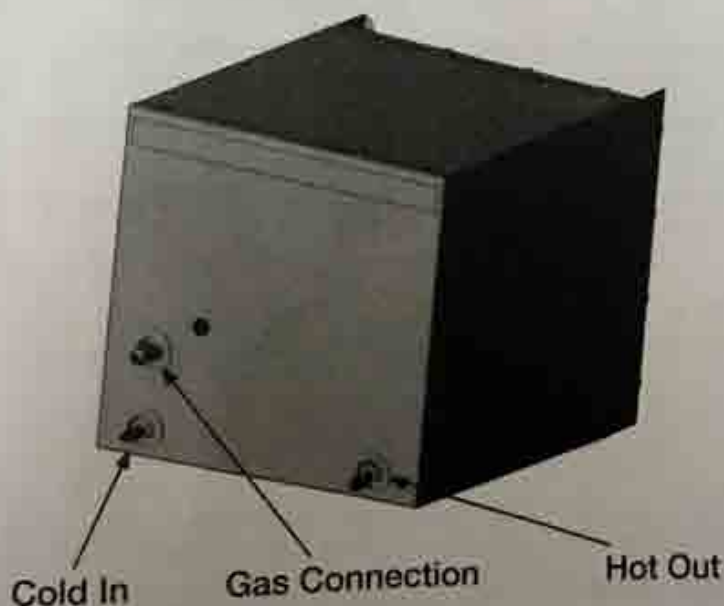
5. Erect the side walls and cut the opening or orient the pre-fabricated opening. Frame with 2" x 2" lumber (or equivalent).
6. Pull the unit outward through the opening and bend all four flanges outward 90 degrees along the lanced lines.



Installation in standard 6 gallon water heater opening with Standard Door Kit



Installation in standard 10 gallon water heater opening with Large Door Adapter Kit



CAUTION **PRODUCT DAMAGE**

Gas connection must be made using TWO (2) wrenches to avoid twisting and damaging line.
Damage voids the Warranty!

7. To prevent water leaks, caulk thoroughly around the backside of the flanges over the lanced bend slots. Caulk the perimeter of the opening (or substitute 1" x 3/8" Butyl Tape).
8. Push the unit to the wall against the caulking and secure the corner brackets behind the unit flanges but snug to the corner of the enclosure. Complete the installation by inserting #8 screws in all the flange holes, ensuring that the casing is installed completely square allowing for a good door fit.
An "air tight" seal must be the final result.

9. Place access door on lower flange lining holes in door up with pins in flange. Carefully close the door while aligning flue outlet with flue opening and pressure switch tube with plastic bushing opening, securely screw door in place with fastener already installed in door.
10. The appliance must be disconnected from the gas supply piping system during any pressure testing of the system at test pressures in excess of 1/2 psi. The appliance must be isolated from the gas piping system during any pressure testing at test pressures equal to or less than 1/2 psi. Pressure inlet to valve, 13" W.C. maximum, 11" W.C. minimum. Pressure at outlet of valve is factory set at 10" W.C.
11. Gas Manifold pressure tap on burner assembly.

The gas manifold pressure at this tap is 9" w.c. +/- 0.5" w.c. for both the OD50 and the OD50CW models.



This water heater has separate and dedicated protection for excessive heat.

If you use a discharge line, do not use a reducing coupling or other restriction smaller than the outlet of the relief valve. Allow complete drainage of both valve and line.

FOR REPLACEMENT PARTS:

- DO NOT install anything less than a pressure relief valve certified by a nationally recognized testing laboratory that maintains periodic inspection of product of listed equipment or materials, as meeting requirements for Relief Valves and Automatic Gas Shutoff Devices of Hot Water Supply Systems, ANSI Z21.22 CSA 4.4. Valve must have maximum set pressure **not to exceed 100 psi**.
- Install replacement valve into opening provided and designated for this purpose on water heater.
- Installation must conform with local codes or in the absence of local codes, Standard on Recreational Vehicles, ANSI A119.2 or CAN/CSA-Z240RV.

WIRING INSTRUCTIONS

The appliance, when installed, must be electrically grounded in accordance with local codes or, in the absence of local codes, with the National Electrical Code, ANSI/NFPA 70 and/or the CSA C22.1, Canadian Electrical Code.

It is required that the unit be connected through a switch that is connected directly to a 12V DC battery or to the filtered side of an AC/DC converter. Avoid unfiltered "linear" voltage sources.

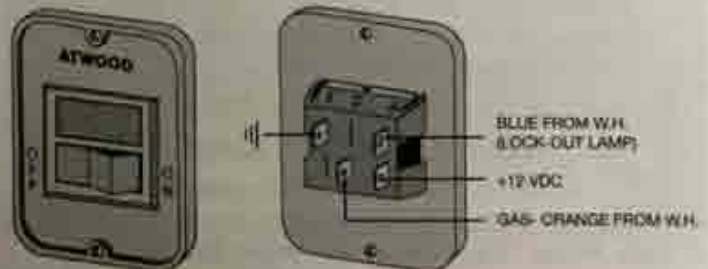
Use a minimum of 18 gauge wire, UL and CSA Listed. Refer to the **Wiring Diagram**. Install a remote switch in a convenient location. Position the wall plate with the letters up. Before making the connections, turn the switch to the OFF position.

RED is 12V DC Positive power IN.

GREEN is 12V DC Ground.

BLUE is 12V DC Pos. Lockout Lamp Signal.

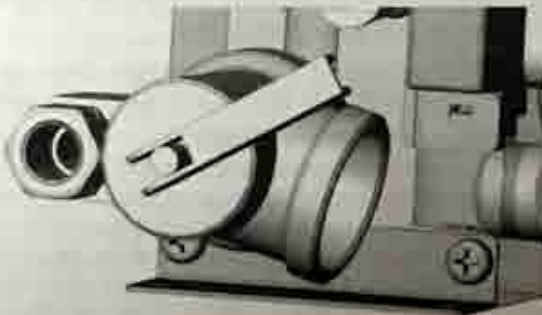
(See illustration of typical switch configuration)



CAUTION
ELECTRICAL DAMAGE

- Label all wires prior to disconnection when servicing controls. Wiring errors can cause improper and dangerous operation.
- Verify proper operation after servicing.

PRESSURE RELIEF VALVE



WARNING
SCALDING INJURY

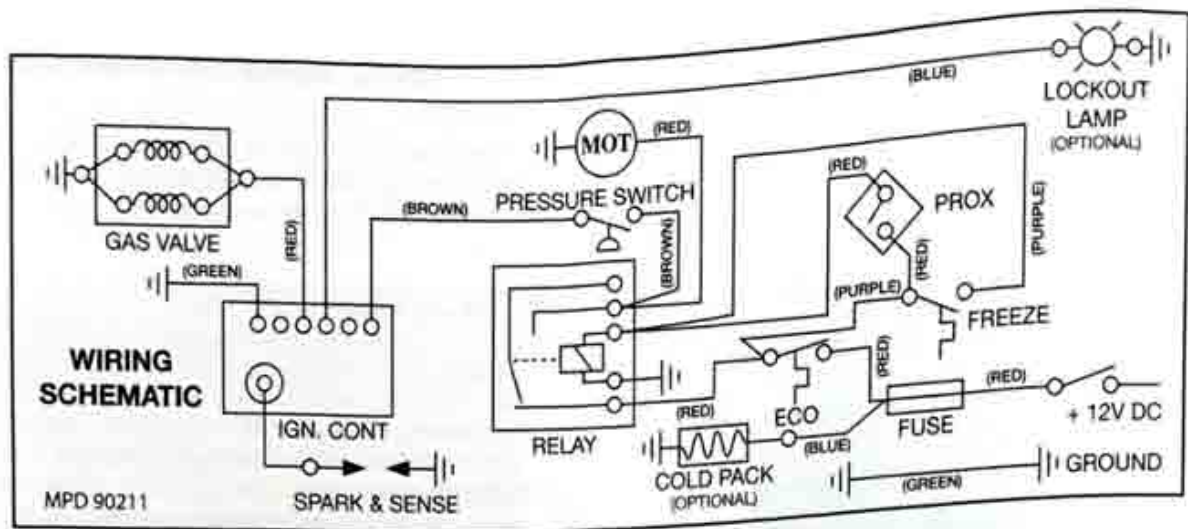
- Valve is not serviceable, it must be replaced.
- Tampering with valve will result in scalding injury.
- Tampering with valve will void warranty.

WARNING
EXPLOSION

- DO NOT place a valve, plug or reducing coupling on outlet part of pressure temperature relief valve.

THIS VALVE IS A SAFETY COMPONENT AND MUST NOT BE REMOVED FOR ANY REASON OTHER THAN REPLACEMENT. This water heater is equipped with a pressure relief valve that complies with the standard for Relief Valves and Automatic Gas Shutoff Devices for Hot Water Systems, ANSI Z21.22 CSA 4.4.

This valve protects against excessive water expansion only.



HOW TO OPERATE YOUR WATER HEATER

CAUTION **FIRE**

- DO NOT smoke or have any flame near an open faucet.

If water heater has not been used for more than two weeks, hydrogen gas may form in water line. Under these conditions to reduce the risk of injury, open hot water faucet for several minutes at kitchen sink before you use any electrical appliance connected to hot water system.

If hydrogen gas is present, you will probably hear sounds like air escaping through the pipe as water begins to flow.

- 1) Pressurize the water system by turning on pump or city water pressure.
- 2) Purge all air from the system by turning on the faucets until a steady stream of water flows.
- 3) Turn on the 12V DC power supply.
- 4) Turn on the LP supply at the tank and the manual gas valve (if installed). The water heater will remain dormant until a water tap is opened and the heater senses water flow of at least 0.5 GPM.
- 5) Turn on the hot water tap to full open. The heater will fire up within several seconds and hot water will flow from the tap in the time it takes to traverse the lines from the heater to the faucet. (If this is the first usage, you may have to turn the water on and off several times to purge the LP gas lines of air.) If the heater fails to light or the lockout lamp (optional) illuminates, turn the power switch OFF, then ON to reset the ignition control.
- 6) To shut off the water heater, shut off the water.
- 7) Should overheating occur or the gas supply fail to shut off, turn off the "ON/OFF" power switch.

A Note About "Navy Showers" When Dry Camping

It is recommended to take a shower just like you would at home. That is, leave the water running through the entire shower. The hot water system is designed to deliver a continuous, comfortable flow of hot water and that's the way it works best.

Shutting off the shower with the showerhead button wastes water. Each time this is done, the showerhead "trickles", filling the hot water line with cold water. This cold water has to be purged from the line each time the showerhead is turned back on. Tests have shown that this will not save water.

GENERAL INFORMATION

- LP and Water system must be turned on.
- Have gas pressure tested periodically. Should be set at 11 inches of water column with three appliances running.
- Drain water heater at regular intervals (at least one time during the year).
- Drain water heater before storing RV for the winter or when the possibility of freezing exists.
- Keep vent and combustion air grill clear of any obstructions.

ELECTRONIC IGNITION MAINTENANCE

- The water heater comes factory-equipped with an in line fuse, which will protect the circuit board from wiring shorts. If the fuse should blow, the water heater will not operate. Before replacing the fuse, check for a short external to the board. Once the short is corrected, replace the 3 amp fuse. Do not install a fuse larger than 3 amps.
- If the fuse is good and the unit is inoperative, check for excessively high voltage to the unit (more than 14 volts).

MODULATING VALVE ADJUSTMENT:

The modulating water valve will have a factory preset setting which is designed and tested for an approximate 65°F rise in temperature for a hot water flow rate ranging from 1.00 GPM to 1.25 GPM as measured at the water outlet (ie. faucet or shower head). Pictures of this valve adjustment are on the next page. The consumer is encouraged to set the modulating valve to provide hot water in the 110°F-115°F range. The consumer can then add cold water to achieve the desired hot water temperature. Care must be taken to prevent higher temperatures which may result in scalding.

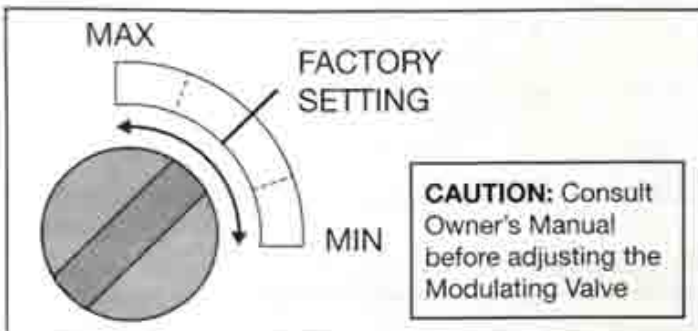
The factory setting will satisfy most applications, however the modulating water valve has been designed with flexibility in mind to handle a wide range of diverse situations. For hotter water temperatures the modulating valve can be adjusted counter-clockwise toward the MAX position; for cooler hot water temperatures, the modulating valve can be adjusted clockwise toward the MIN position. One should use caution not to force the valve adjustment beyond the MAX and MIN points.

CAUTION

- Consult Owner's Manual before adjusting the Modulating Valve.




Modulating Valve as viewed from exterior door



Some factors relating to output performance are:

1. City or Park Water Service incoming pressures.
2. Obstructions or restrictions in the water system including water bypass valves in vehicles. The bypass valve in your water system should be OFF during normal use.
3. Use of flow restrictors in faucets and/or shower heads. Eliminate restrictors for best performance.
4. Propane gas system pressure should be 11" w.c. while in operation. Be sure that LP tanks have plenty of gas and are properly regulated. This should be verified by an authorized Atwood service technician.

If problems persist, please contact the nearest authorized Atwood Service Center or call Atwood Technical Support at 1-866-869-3118.

 CAUTION	
<p>SCALDING INJURY Setting temperature control dial at a higher position increases temperature of the water, increasing the risk of scalding injury. Before selecting or changing the temperature setting, see instruction manual MPD 93756.</p>	<p>PRODUCT DAMAGE BURNER TUBE - Spiders or insects can build nests in burner tube causing obstructions. Indications of obstructions are: • change in burner sound • change in flame appearance from a hard blue flame to a soft lazy flame • very yellow flame • sooting condition. Regularly inspect and clean burner tube to prevent obstructions.</p>

Summer Operation:

During the summer months when the incoming water temperatures are relatively warm (ranging from 70°F to 90°F) it is recommended that the modulating valve adjustment be placed in the MIN position. This reduces the gas input of the heater to keep the water temperature from getting too hot with high incoming water temperature

Winter Operation:

During the winter months when incoming water temperatures are cooler (ranging from 45°F to 70°F) it is recommended to place the modulating valve adjustment in the MAX position.

In addition, the OD50 comes equipped with a cold weather switch on the heat exchanger that will cycle the burners on and off at low input when the temperature of the heat exchanger reaches approximately 38°F and leaves the burners on until the temperature of the switch reaches approximately 55°F. This protection is only recommended for camping in weather down to 15°F.

For operation during even colder outside temperatures (as low as -15°F) the cold weather kit option (or model OD50CW) is recommended. The cold weather kit consists of a 12 VDC heat pad for the modulating valve and 2 ceramic heat blocks for the water lines. This will keep the water in the system from freezing when in the OFF state in extreme cold conditions.



Without the Cold Weather Kit Installed



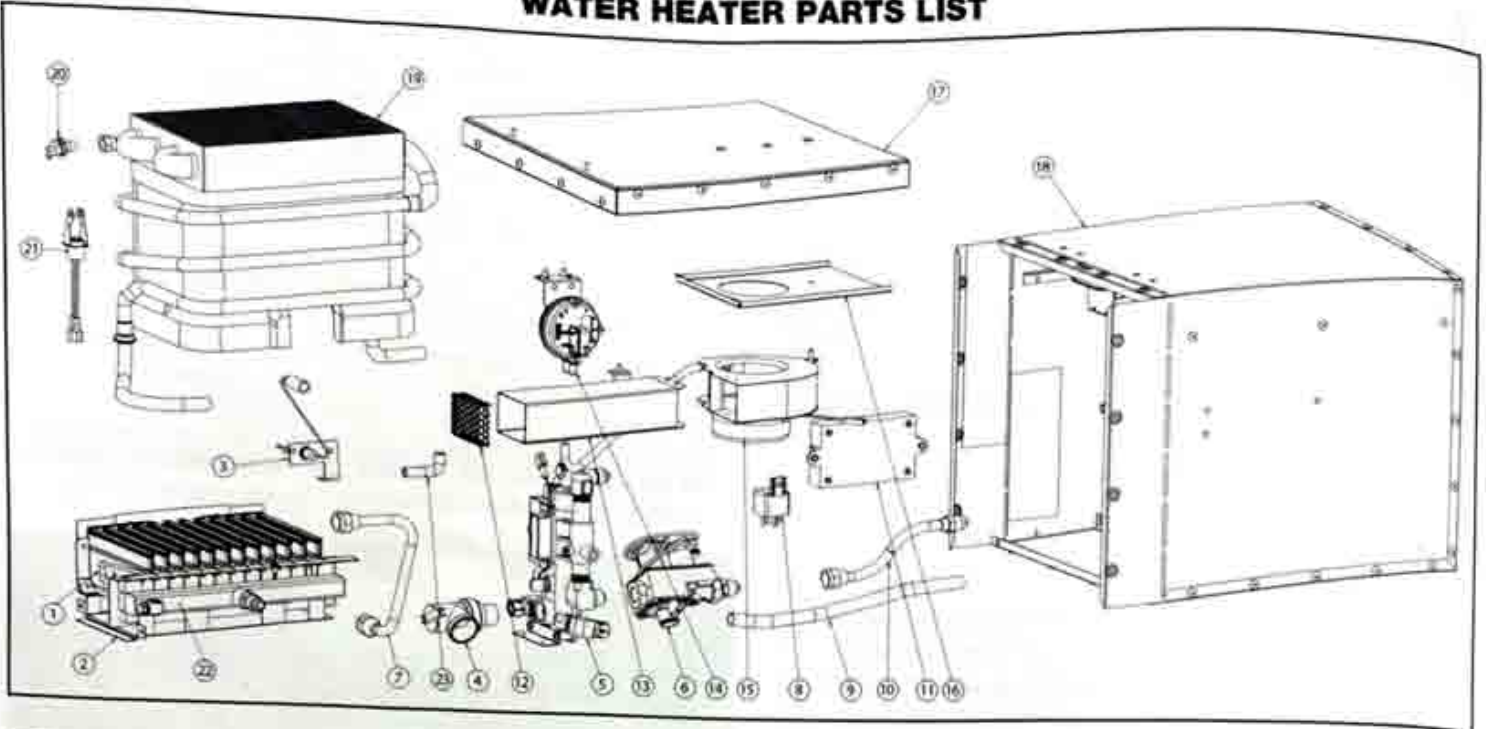
With the Cold Weather Kit Installed

Winter Protection During Storage:

Before storing the system for the winter, all water should be drained from the system. To do this, open one tap at a time using compressed air to purge the system of all water. Then either of the following steps should be taken:

- 1) Once purged, simply open the Pressure Relief Valve and leave in the open position.
- 2) Once purged, close the Pressure Relief valve and add a non-toxic RV antifreeze if recommended by your coach manufacturer.

WATER HEATER PARTS LIST



ITEM	DESCRIPTION	PART #
1	Burner Assy (50,000 Btu)	90264
2	Burner Mounting Bracket	90265
3	Igniter	90266
4	Pressure Relief Valve (PRV)	90267
5	Modulating Valve Assembly	90268
6	Gas Valve	90269
7	Gas Line - Burner	90270
8	Relay	90271
9	Water Inlet Tube	90272
10	Gas Inlet Tube	90273
11	Ignition Control	90274
12	Flue Outlet Screen	90275
13	Flue Tube	90276
14	Pressure Switch	90277
15	Blower Assembly	90278
16	Fan Base	90279
17	Flue Hood Assembly	90280
18	Case Assembly	90281
19	Heat Exchanger	90282
20	ECO	90283
21	Low Temperature Switch Kit	90346
22	Orifice #71 (50,000 Btu)	90286
23	Pressure Elbow Assy	90287
NS	Standard Door Kit (specify color)	Inquire
NS	Large Door Kit (specify color)	Inquire
NS	Winter Kit	90290

TROUBLESHOOTING

Most problems are easily remedied by consulting the troubleshooting guide. If problems still persist, contact Atwood or an authorized service center. Only a qualified technician should do any work involving the gas system.

A periodic visual check of the burner flames should be done by observing the flame through the "peep hole" in the heat exchanger. There should be blue flame with minimum or no yellow tipping.

Burner maintenance should be performed by an Atwood Authorized Service Technician.

NOTE: The heater is dormant until it senses water flow. When a water tap is turned on to at least .5 GPM the burner will fire until water flow is turned off and the heater again goes dormant.

Heater Does Not Come On When The Water is turned on. (Power vent not running)

1. Be sure all electrical connectors are secure and the polarity is correct. (Red wire to positive terminal).
2. Be sure power is on and panel breaker is not tripped.
3. Check electrical contacts. Be sure the connector is plugged into board. Using a voltmeter, check for 12 Volts on this connector.
4. Fuse in power wire might be blown. Replace fuse.

5. Be sure there is a battery in the system. Never connect the heater directly to a power converter. Some converters have circuits that are not pure DC. This can cause malfunctions or damage to the heater and is not covered by warranty.
6. Be sure that no water-mixing valve has been left in the on position, using the showerhead as a shut off. This will permit water to bypass the water heater and bleed cold water into the hot water system. Always turn off both hot and cold water valves after using.
7. Be sure that the bypass valve at the water plumbing connections is in the "off" position. An open valve can also permit water to bypass heater, causing it not to fire.
8. Locate the ECO, high temperature switch (two red wires) at the upper left hand of the heat exchanger. Check for open circuit condition. The ECO should be reset by pushing the reset button when temperature drops below 160 degrees.

There Is No Ignition When Water Is On (Power vent is running)

1. Be sure the gas valve at the tank is "On", there is gas in the tank and the gas line is purged of all air.
2. Check that the ignition wire is plugged into the spark tower on the ignition control and is not touching anything else.
3. Check flame site hole to see if igniter is sparking from the probe to the burner. Bend ignition wire to adjust to proper gap dimension or contact Atwood or you're nearest authorized service representative.
4. Check that there are no cuts or breaks in the wire. Align it so that it is not in contact with anything but the terminal.
5. Be sure that the power vent fan has 12 volts to it when there is water flowing and there are no obstructions in the flue pipe.
6. Make sure pressure switch is closed by checking for voltage across terminals, should be 0 volts, if reading 12 volts check for flue obstruction or obstruction in sense line tubing.

No Water Flows From Tap When Tap is Turned on.

1. Be sure that water supply is turned on and that there are no obstructions.

Burner Turns On But Temperature Fluctuates Erratically.

1. May be caused by excessive restriction at the water outlets, showerheads, aerators or water strainers. These should be cleaned and any showerhead flow restrictor removed.
2. The gas modulating valve is out of calibration. Consult Atwood.

Heater Comes On But Rapidly Cycles On And Off.

1. Water flow is too low. Increase flow at a tap. Clean all aerators and shower head screens to assure at least .5 GPM of water flow

2. Water pump is not functioning properly. Repair or replace pump.
3. If the heater cycles as the pump cycles, a pressure accumulator tank is needed in the water system. If you have an accumulator tank, check to see if it has become filled with water. If it has, drain it so that it contains air only.
4. Air is in the water line. Bleed air by turning on all water taps.
5. Water source pressure fluctuating too low causing loss of flow, check incoming water source pressure, should be a minimum of 30 psi.

Burner Ignites But Water Temperature Is Too Low

1. The water flow may be so high as to exceed the capacity of the heater particularly if your supply water is very cold. Slow the water flow.
2. The gas pressure may be too low. Be sure the gas flow control valve is in full "on" position.
3. Check the gas pressure while the water is on at full flow. The LPG pressure should be the "manifold pressure" as shown on the specification label while the heater is running. A gas-testing gauge should be installed on the manifold tap so that it may be read while heater is running. If it is too low, turn up the gas regulator to the proper pressure. This should only be done by a qualified technician.
4. The gas flow may be too low due to improper gas line diameter (under 3/8 inch outside diameter). The gas line may be excessively long (over 20-30 feet) or the on/off solenoid at the tank (if you have one) may have an orifice that is too small (under 3/16th of an inch).
5. Check the heater door louvers and flue pipe for airflow obstructions and clean.
6. Check that the "winter/summer" valve is in the proper position for the temperature of the incoming water.

Water Temperature Too Low at Lower Water Flow Rates

1. Check that the "winter/summer" valve is in the proper position for the temperature of the incoming water.
2. Be sure to momentarily turn hot water flow to high, then back to the lower flow when turning on a water faucet. This will bring the gas flow to the required higher setting.
3. For single lever shower controls you may have to adjust internal temperature control to a higher setting to allow for more hot water flow to properly activate the water heater.

Water Temperature Is Too Hot or No Temperature Control.

1. Fuel tank regulator is set too high and manifold pressure as described above. Have the regulator checked by a qualified technician.
2. Check that the "winter/summer" valve is in the proper position for the temperature of the incoming water.
3. Water flow too low for incoming water temperature.

Low Heat Rise and Excessive Water Flow Is Required To Trigger Water Heater

If you find that your heater requires excessive flow to activate it (much over .5 gallon per minute), it is likely that you have cold water bleeding into the hot water side of your water system.

1. Check that valves and faucets are closed when not in use. If there is an on/off button on your showerhead, always turn the water valves off after the shower to prevent cold water from bleeding into the hot water system. This will keep the heater from functioning properly.
2. Be sure that the bypass valve at the water plumbing connections is in the "off" position. An open valve can also permit water to bypass heater, causing it not to fire.

If any problem persists, contact an authorized service center or Atwood.

ATWOOD WATER HEATER LIMITED WARRANTY

Atwood Mobile Products warrants to the original owner and subject to the below mentioned conditions, that this product will be free of defects in material or workmanship for a period of two years from the original date of purchase. Atwood's liability hereunder is limited to the replacement of the product, repair of the product, or replacement of the product with a reconditioned product at the discretion of the manufacturer. This warranty is void if the product has been damaged by accident, unreasonable use, neglect, tampering or other causes not arising from defects in material workmanship.

This warranty extends to the original owner of the product only and is subject to the following conditions:

1. For a period of two years from the date of purchase, Atwood will replace the complete water heater if the heat exchanger leaks due to corrosion. This warranty includes reasonable labor charges required to replace the complete water heater.
2. For two years from the date of purchase, Atwood will repair or replace any part defective in material or workmanship. This warranty includes reasonable labor charges, required to remove and replace the part.
Service calls to customer's location are not considered part of these charges and are, therefore, the responsibility of the owner.
3. This warranty does not cover the following items classified as normal maintenance:
 - a. adjustment of gas pressure
 - b. cleaning or replacement of burner orifices
 - c. cleaning or adjustment of burner assembly
 - d. cleaning or adjustment of flue
 - e. adjustment of pressure relief valve
4. In the event of a warranty claim, the owner must contact, in advance, either an authorized Atwood Service Center or the Atwood Service Department. Warranty claim service must be performed at an authorized Atwood Service Center (can be found online @ www.atwoodmobile.com) or as approved by the Consumer Service Department, Atwood Mobile Products, 1120 North Main St., Elkhart, IN 46514 USA. Phone: (866-869-3118).
5. Return parts (or water heater) must be shipped to Atwood "Prepaid". Credit for shipping costs will be included with the warranty claim. The defective parts (or water heater) become the property of Atwood Mobile Products and must be returned to the Consumer Service Department, Atwood Mobile Products, 6320 Kelly Willis Road, Greenbrier, TN 37073 USA.
6. This warranty applies only if the unit is installed according to the installation instructions provided and complies with local and state codes.
7. The warranty period on replacement parts is the unused portion of the original warranty period or ninety (90) days, whichever is greater.
8. Damage or failure resulting from misuse (including failure to seek proper repair service), misapplication, alterations, water damage, or freezing are the owner's responsibility.
9. Atwood does not assume responsibility for any loss of use of vehicle, loss of time, inconvenience, expense for gasoline, telephone, travel, lodging, loss or damage to personal property or revenues. Some states do not allow the exclusion or limitation of incidental or consequential damages, so the above limitations or exclusions may not apply to you.
10. Any implied warranties are limited to two (2) years. Some states do not allow limitations on how long an implied warranty lasts, so the above limitation may not apply to you. This warranty gives you specific legal rights and you may also have other rights which vary from state to state.
11. Replacement parts (components) purchased outside of the original water heater warranty carries a 90 day warranty. This includes the part at no charge and reasonable labor charges to replace it. This Atwood heater is designed for use in recreational vehicles for the purpose of heating water as stated in the "data plate" attached to the water heater. Any other use, unless authorized in writing by the Atwood Engineering Department, voids this warranty.